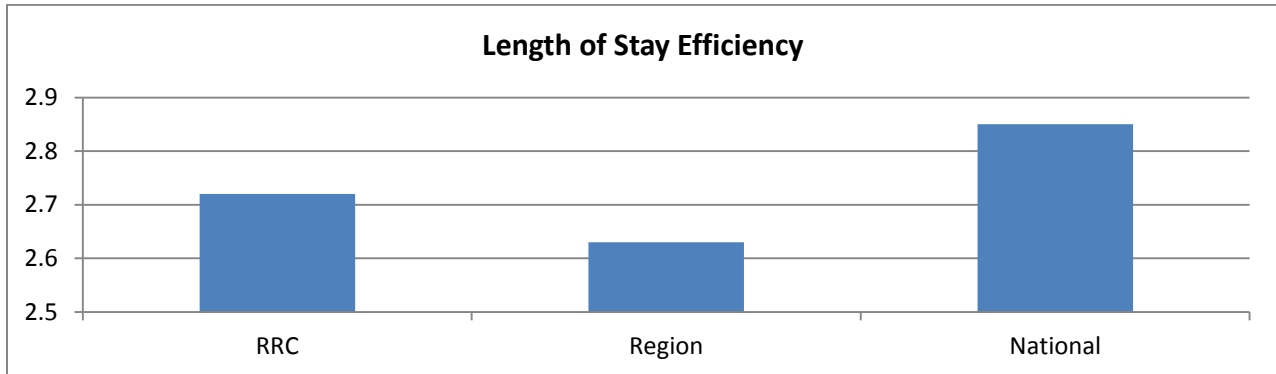


# Riverview Rehabilitation Center

## Outcomes Report

2017

**RRC's goal is to maximize the functional status of our patients as measured by the key indicator Length of Stay efficiency. Length of stay efficiency compares the functional improvement gains made by our patients during their rehabilitation program with the length of stay.**



**RRC has an outstanding team of clinicians and physicians who work together to provide our patients with the highest quality of care and service available in the region. Our Patients ranked us in the percentile nationally for patient satisfaction as measured by Press Ganey.**

